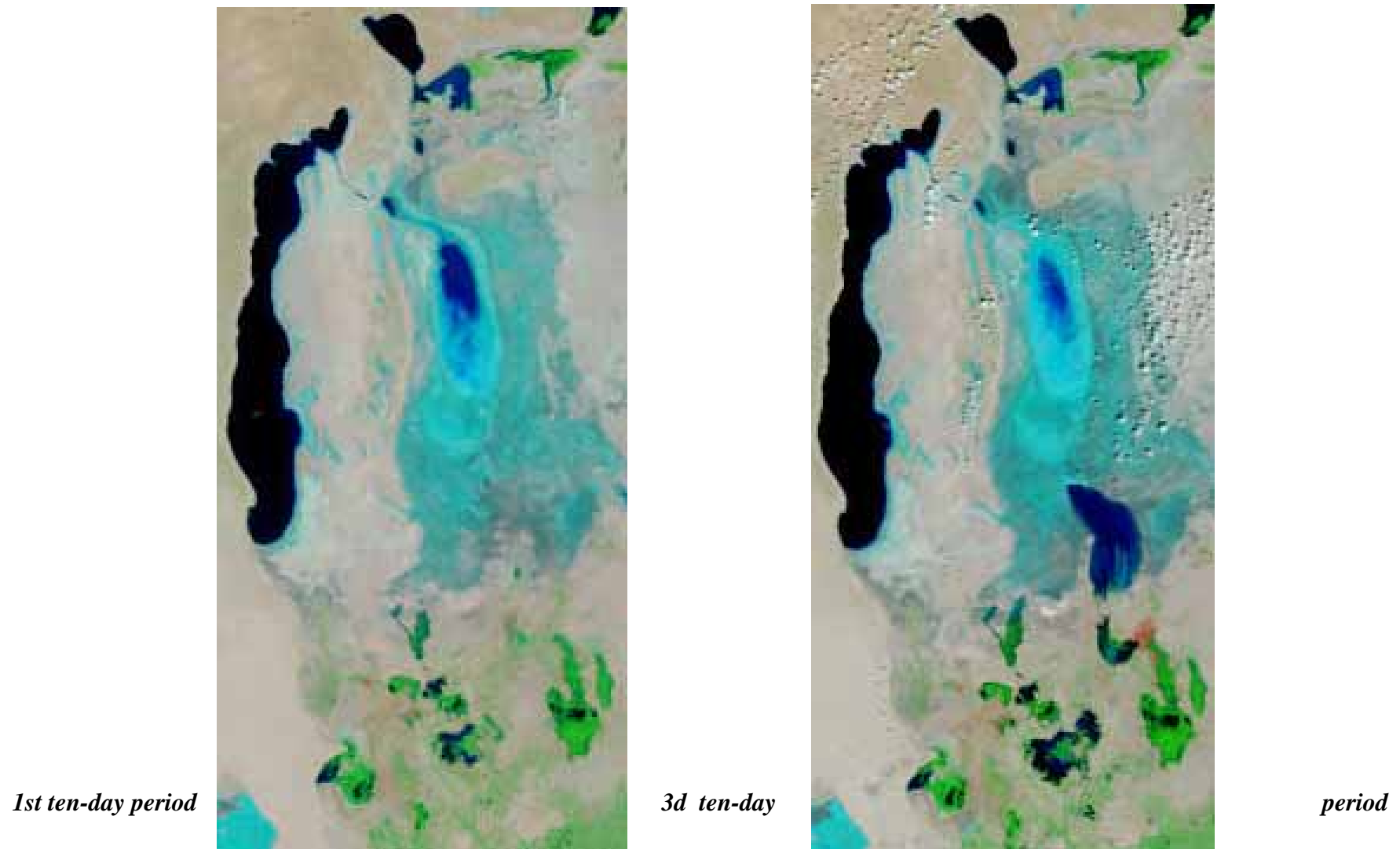


## Monitoring the wetlands area dynamics in the Southern Priaralie

The wetland areas and opened water surface area in the Southern Priaralie for July 2012 are determined by SIC ICWC (Fig. 1, Tables 1,2).



**Fig. 1. Southern Priaralie and Big Aral Sea - July 2012**

**Table 1**

**Opened water surface area, ha  
(March - July 2012)**

<b>Water Body</b>	<b>March</b>	<b>April</b>	<b>May</b>	<b>June</b>	<b>July 1<sup>st</sup> ten-day pe- riod</b>	<b>July 3d ten-day pe- riod</b>
Sudochie	14975,3	23067,14	16543,9	11695,8	7921,4	7857,2
Mejdurechenskoe	6546,5	9837,59	11693,9	12065,7	12848,5	21890,5
Rybachie	3489,4	3390,12	4317,4	4771,3	4249,7	5153,7
Muinakskoe	1551,8	3128,61	1273,5	1321,7	851,3	1109,6
Djyltyrbas bounded by dam	10334,23	11496,17	13471,5	9140,8	6754,8	6871,3
Djyltyrbas (with the former right and left channels)	12269,7	19721,56	15126,3	9665,1	6472,3	20830,4
Dumalak	-	1558,7	-	-	-	11422,5
Makpalkol	696,2	4329,96	3958,4	2583,7	2210,7	2187,6
Mashan-Karadjar	671,5	3197,72	3182,6	839,5	382,7	347,1
Wetland to the south from Muinak	-	284,51	-	-	-	157,4
Wetlands along the bed of the Kazakhdarya river	-	-	-	-	-	212,8
Zakirkol lake	-	384,61	157,2	-	-	347,6
<b>Total</b>	<b>50534,63</b>	<b>68900,52</b>	<b>69724,7</b>	<b>52083,6</b>	<b>41691,4</b>	<b>78387,7</b>

Moreover the water surface area of the southern part of the Eastern Sea amounted 99 769,9 ha.

Thereby the water surface area has increased by 13646602 ha from 1st till 3d ten-day period.

**Table 2****Wetland areas, ha (April - July 2012)**

<b>Water body</b>	<b>April</b>	<b>May</b>	<b>June</b>	<b>July</b>
Sudochie	27884,58	35723,4	32415,1	31996,8
Mejdurechenskoe	2413,87	8892,2	14199,5	13974,2
Rybachie	1347,91	4392,7	6373,4	6873,5
Muinakskoe	3589,87	7328,1	8459,1	9317,5
Djyltyrbas bounded by dam	27423,56	32758,5	39465,7	41207,3
Djyltyrbas (with the former right and left channels)	42581,47	70354,1	79680,4	81371,6
Former Adjibay gulf	11351,59	11986,3	12361,7	14731,8
Dumalak	1423,54	3681,7	7389,3	8157,2
Adjibay 2*)	4225,36	6831,4	6356,4	10459,1
Makpalkol	773,41	4026,7	6410,5	6536,2
Mashan-Karadjar	2871,43	10082,3	12638,4	11087,3
Wetland to the south from Muinak	521,32	625,7	1481,9	1674,5
Wetland to the north-west from Muinak	3498,10	3516,7	3374,1	3189,4
Wetlands along the bed of the Kazakhdarya river	283,52	854,7	6578,3	8783,1
Zakirkol lake	124,17	789,2	1298,4	1913,8
<b>Total</b>	<b>102890,1</b>	<b>201843,7</b>	<b>238482,2</b>	<b>251273,3</b>

Water surface area of the Eastern and Western parts of the Big Aral Sea was estimated using satellite images:

- Eastern Sea – 446,2 km<sup>2</sup>
- Western Sea – 3798,9 km<sup>2</sup>

According the bathymetric chart the estimated areas of the Eastern part correspond to the level = 25,8 m;  
Volume at the level  $\approx 0,25$  km<sup>3</sup>