

Monitoring the wetlands area dynamics in the Southern Priaralie

The water surface areas in the Southern Priaralie in April 2012 were determined.

Comparing water surface areas for April 2011 and April 2012 is given on Fig. 1.

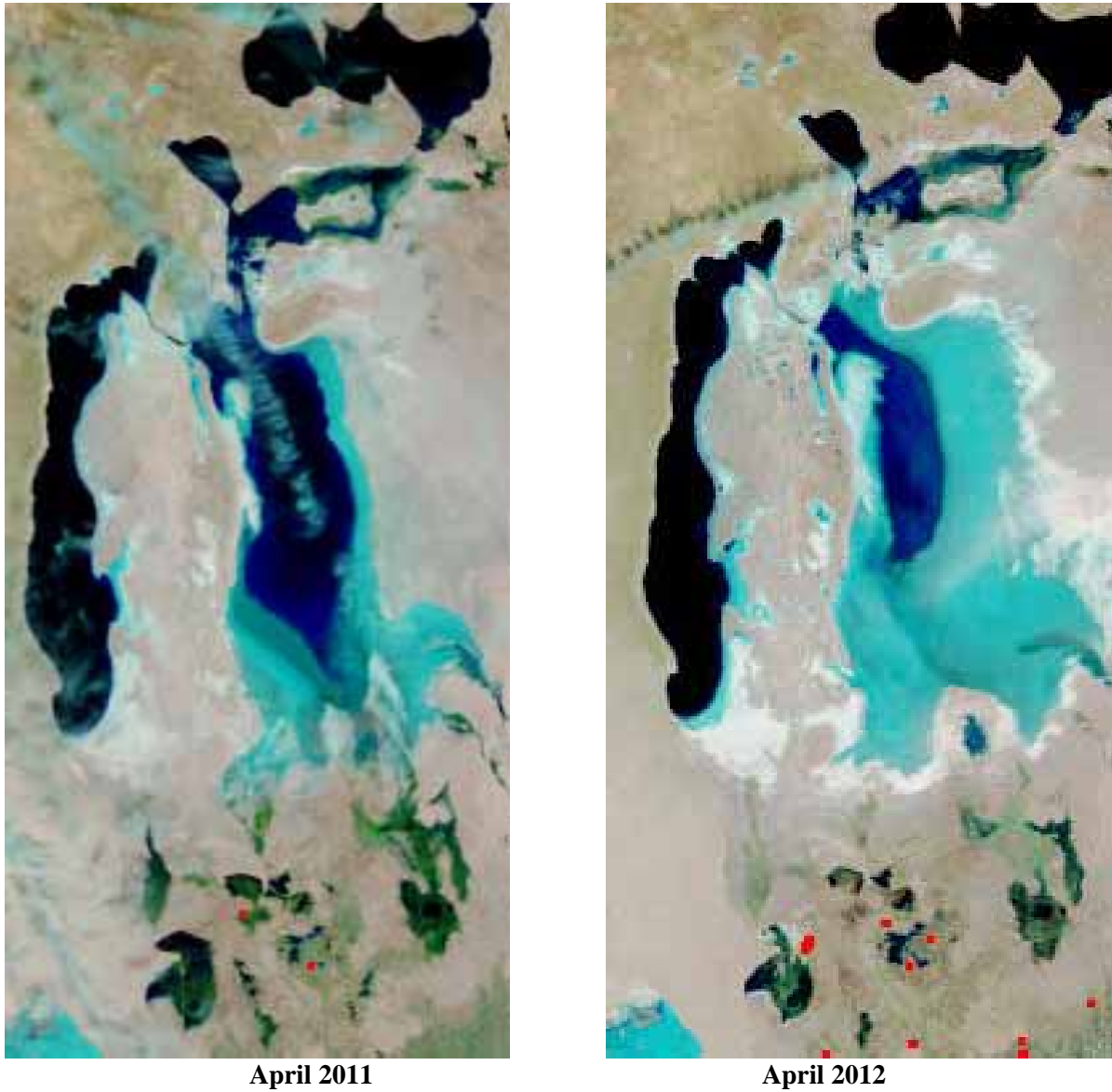


Fig. 1. Dynamics of water surface areas in the Southern Priaralie

Comparing water surface areas for April 2011 and April 2012 is given on Table 1.

Table 1

Water surface areas, ha (March 2011)

Water Body	April 2 011	April 2 012
Sudochie	35913,96	23067,14
Mejdurechenskoe	9639,56	9837,59
Rybachie	5952,92	3390,12
Muinakskoe	5184,01	3128,61
Djyltyrbas bounded by dam	13976,22	11496,17
Djyltyrbas (with the former right and left channels)	29308,85	19721,56
Dumalak	1579,32	1558,7
Makpalkol	2533,15	4329,96
Mashan-Karadjjar	6244,58	3197,72
Wetland to the south from Muinak	1562,82	284,51
Wetlands along the bed of the Kazakh-darya river	4885,01	-
Zakirkol lake	1010,07	384,61
Total	103814,3	68900,52

Comparing wetland areas for April 2011 and April 2012 in the Southern Priaralie is given on Table 2.

Table 2**Wetland areas for April 2011 and April 2012, ha**

Water body	Wetlands April 2011	Wetlands April 2012
Sudochie	29707,42	27884,58
Mejdurechenskoe	1845,53	2413,87
Rybachie	2163,22	1347,91
Muinakskoe	7328,11	3589,87
Djyltyrbas bounded by dam	18898,65	27423,56
Djyltyrbas (with the former right and left channels)	46525,38	42581,47
Former Adjibay gulf	18773,25	11351,59
Dumalak	3403,11	1423,54
Adjibay 2*)	2954,82	4225,36
Makpalkol	415,89	773,41
Mashan-Karadjjar	4838,41	2871,43
Wetland to the south from Muinak	6620,41	521,32
Wetland to the north-west from Muinak	3372,18	3498,10
Wetlands along the bed of the Kazakh-darya river	5483,46	283,52
Zakirkol lake	1236,08	124,17
Total	153565,92	102890,1

Water surface area of the Eastern and Western parts of the Big Aral Sea was estimated using satellite images:

- Eastern Sea – 1906,51 km²
- Western Sea – 3897,2 km²

According to the bathymetric chart the estimated areas correspond to the following levels:

- Eastern Sea: April 2012 \approx 27,4 m; Volume at the level \approx 2,5 km³
- Western Sea: April 2012 \approx 27,8 m; Volume at the level \approx 53,27 km³