

**AFGHANISTAN
ZABUL PROVINCE
LAND COVER MAP**



LEGEND

- BOUNDARIES**
- International
 - Province
 - District
- CENTERS**
- Province
 - District
 - Village
- ROADS**
- Primary
 - Secondary
- RIVERS**
- Main
 - Seasonal
- LAND COVER CLASSIFICATION 1993**
- Settlements
 - Fruit Trees
 - Vineyards
 - Gardens
 - Irrigated: Intensively Cultivated (2 Crops/year)
 - Irrigated: Intensively Cultivated (1 Crop/Year)
 - Irrigated: Intermittently Cultivated
 - Rainfed Crops (flat lying areas)
 - Rainfed Crops (sloping areas)
 - Pistachio Forest
 - Natural Forest (closed cover)
 - Natural Forest (open cover)
 - Degenerate Forests/High Shrubs
 - Rangeland (grassland/forbs/low shrubs)
 - Rock Outcrop / Bare Soil
 - Sand Covered Areas
 - Sand Dunes
 - Marshland Permanently inundated
 - Marshland Seasonal
 - Water Bodies
 - Permanent Snow

SOURCES:

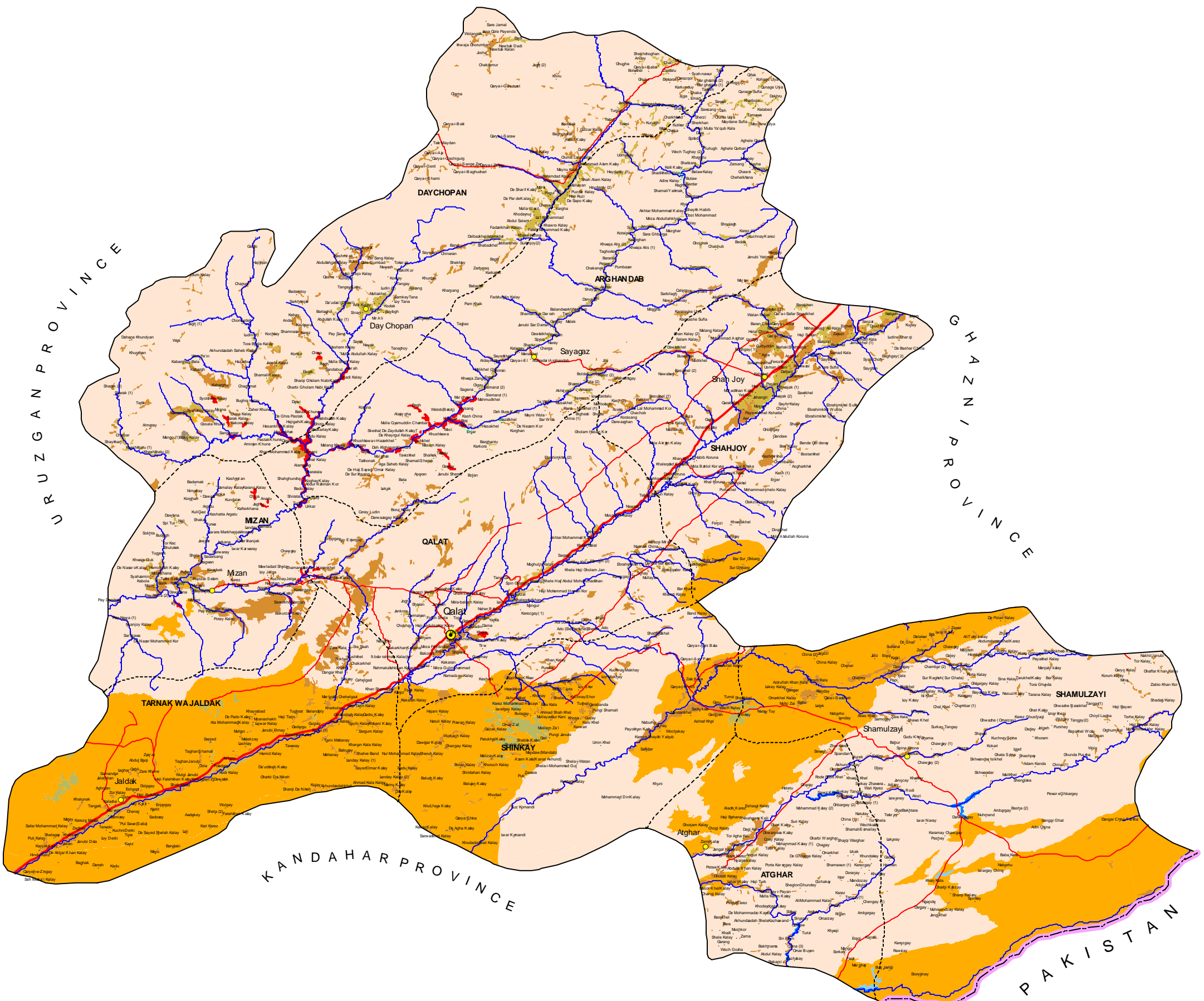
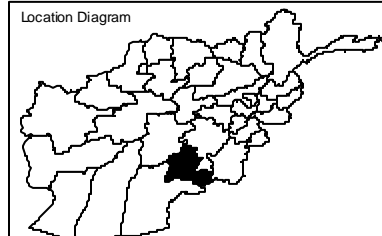
1- This Land Cover Map is based on interpretation of Landsat Thematic Mapper (TM) satellite imagery of Afghanistan, acquired in 1990 (full coverage) and 1993 (partial coverage). The interpretation was assisted through the use of KFA-1000 space photographs of various regions of Afghanistan, acquired from 1988 through to 1992.

2- Topographic base used for this map is derived from National 1:100,000 scale topographic maps compiled by stereo photogrammetric method using aerial photographs acquired in the late 1950s. The projection of these topographic base maps is UTM, and the coverage of each map is 30 minutes of longitude by 20 minutes of latitude.

NOTE:

The boundaries and names on the maps do not imply official endorsement or acceptance by the United Nations.

For further information contact AIMS
e-mail: info@hic.org.pk



Date: April 2002

